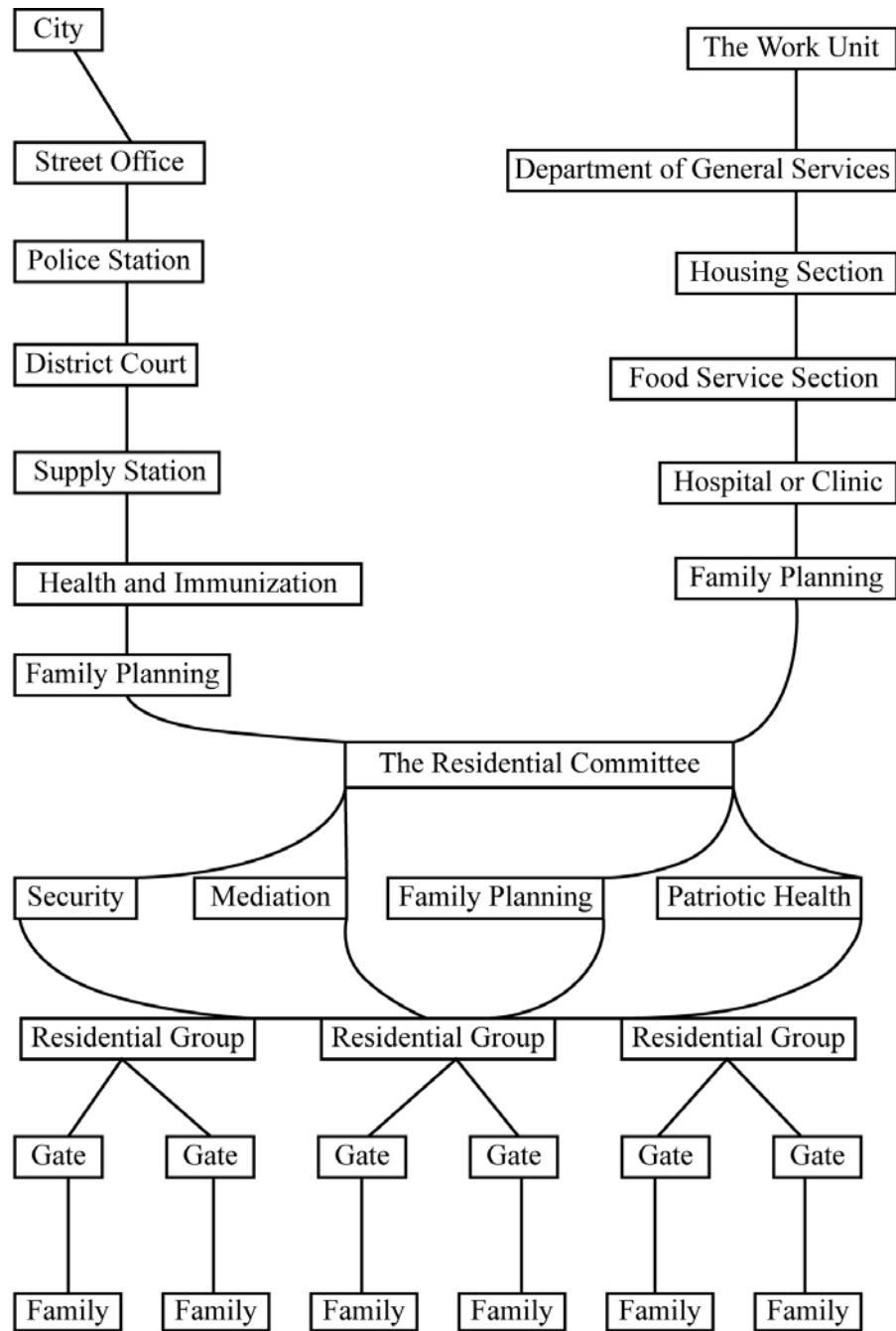


SHANGHAI CONFERENCE JULY 2005

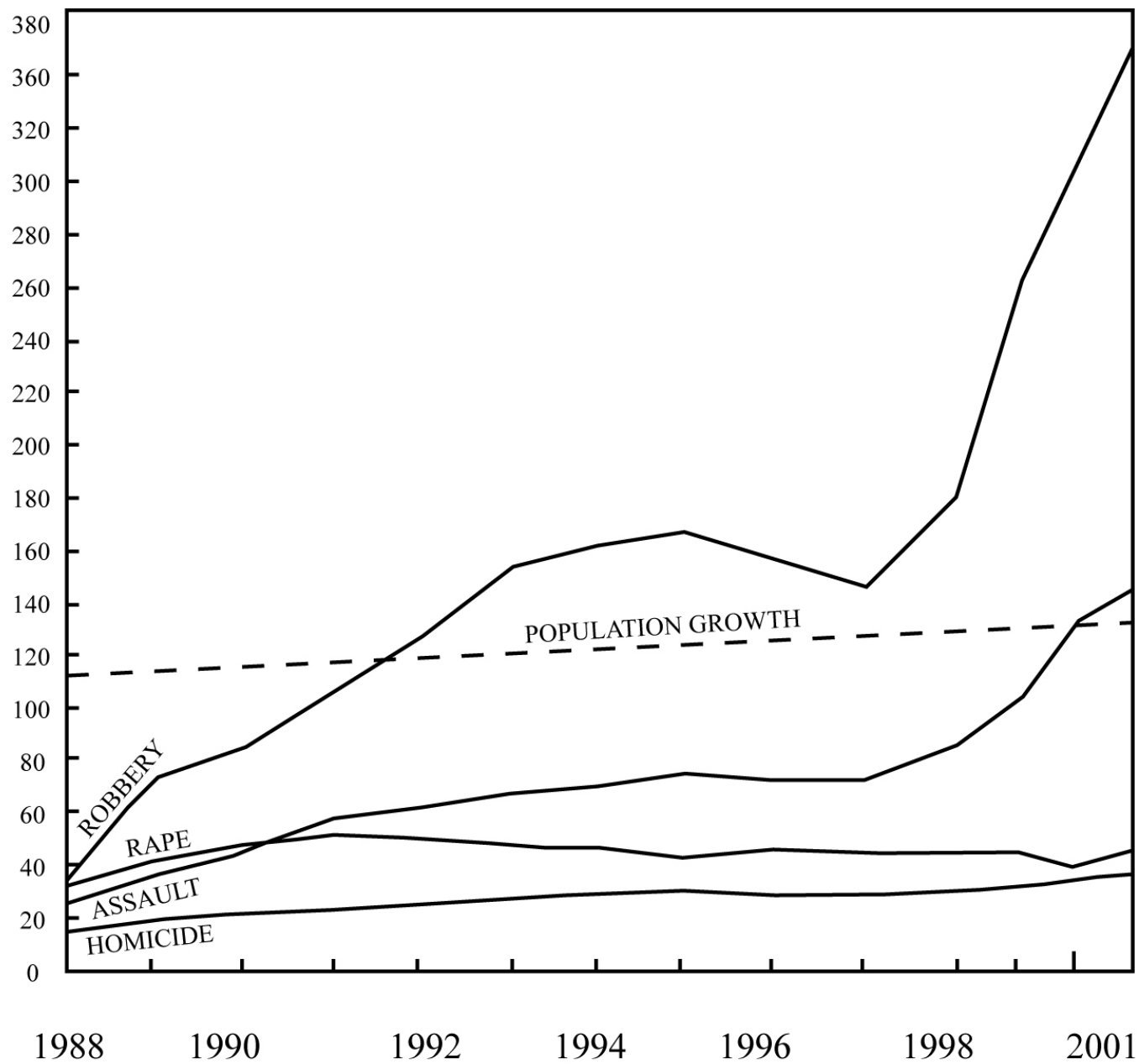
Sophie Body-Gendrot  
Sorbonne

*Urban Age so far – Public life*



Residential Control

Source: Shaw, V. (1996). *Social Control in China*. Greenwood Publishing: Westport. pp. 56.



Violent Crime Cases in China in Absolute Numbers, 1988 - 2001.

(Cases given in thousands, population given in ten millions)

Source: Bakeen, B. (2005) Crime, Punishment, and Policing in China.

Rowman and Littlefield: Lanham.pp. 66.